

Historic, archived document

Do not assume content reflects current scientific knowledge, policies, or practices.



62.61

1905.

TRADE PRICE-LIST
OF CHOICE

GLADIOLI,
LILIES, IRIS,
And Various Bulbs and Plants

GROWN BY
JOHN LEWIS CHILDS.

OUR Collection of Gladiolus is the largest and finest in existence, and we supply most of the Bulbs which the world uses. Their cultivation is our leading specialty, and last season we grew 100 acres of them, and at this writing have upwards of 10,000,000 bulbs for sale. All guaranteed first-class and true to name. We also offer a choice collection of home-grown Lilies, Iris, Cannas, and various Bulbs and Plants.

TERMS.—All bills due January 1st and June 1st. If not paid then interest will be added. Orders from unknown parties must be accompanied with cash or satisfactory reference. 25 Bulbs given at 100 rates; 250 at 1,000 rates. A discount of 8 per cent. for cash with order, or 5 per cent. if paid within 30 days. All goods travel at risk of consignee.

A very small charge will be made for Packing Cases and Barrels.

Early Orders Will Secure the Finest Bulbs.

CUT FLOWERS. During the blooming season we can supply fine spikes of Gladiolus in any quantity, on short notice, and at reasonable prices.

JOHN LEWIS CHILDS,

Floral Park, N. Y., U. S. A.

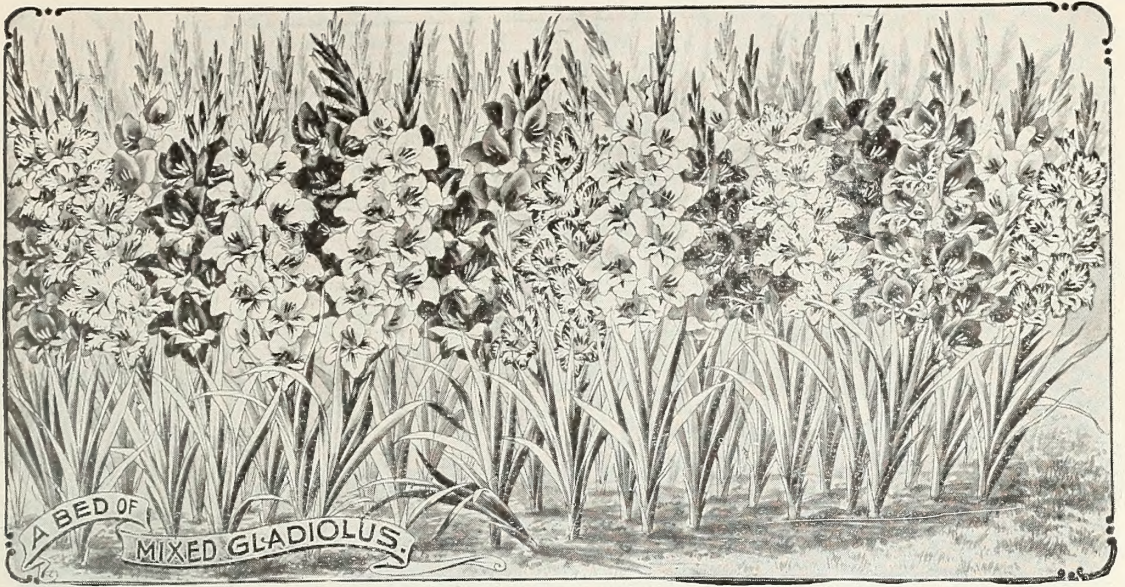
GLADIOLI OF SPECIAL MERIT.

GANDEVENSIS.

AUGUSTA —Lovely pure white, with blue anthers.....	100	1000
BRENCHLEYENSIS —Vermillion-scarlet; fine old variety.....	5 00	40 00
CERES —Pure white, spotted with purplish rose.....	1 00	8 00
ISAAC BUCHANAN —Very fine yellow.....	1 00	9 00
JOHN BULL —White, slightly tinted with sulphur.....	4 00	35 00
LAMARCK (DE) —Cherry, lightly tinted with orange, blazed with red, center is very well light- ed, with large, pure white stain.....	2 00	16 00
MADAME MONNERET —Delicate rose.....	2 00	15 00
MAY —A lovely pure white flower, finely flaked bright rosy crimson; superb spike.....	1 50	12 00
NAPOLEON III —Bright scarlet; white line on each petal.....	2 50	16 00
GEN. PHIL. SHERIDAN —Fiery red, with white line running through each petal, and a large, pure white blotch on the lower division.....	75	7 00
EMMA THURSBY —White ground; carmine stripes through petals; blotch on the lower division.....	3 00	25 00
OCTOROON —A beautiful salmon-pink; very distinct.....	4 00	30 00
PROLIFIC PINK —A fairly good pink variety.....	6 00	50 00
REINE BLANCHE —Pure white, dark carmine blotch.....	75	6 00
SHAKESPEARE —White, very slightly suffused with carmine-rose; large rosy blotch.....	3 00	25 00
SNOW WHITE —All that need be said about this grand novelty is, that it is absolutely pure <i>snow- white</i> , the only pure white Gladiolus in existence. It also has large, well open flowers and an enormous spike of the most perfect and beautiful shape.....	5 00	40 00
	10 00	85 00

CHILDSI.

BLANCHE —Largest flowers, pure snow white, with but faint marks of soft rose. Finest white..	15 00	100 00
COLUMBIA —Light orange-scarlet, freely blotched and penciled with bluish purple. Throat freely mottled.....	2 50	20 00
DEBORAH —Dark red, tinged with amaranth. Very large pure white throat and blotches, white band through petals.....	4 00	30 00
DR. SELLEW —Large spike and very large flower, of great substance. Deep, rich rosy crimson, slightly penciled darker. Center of petals and throat rayed white.....	3 50	30 00
FLORIDA —Dark crimson, very early.....	2 00	15 00
GOVERNOR McCORMACK —Extra large flowers and truss. Beautiful rose, mottled with sil- ver gray, and with violet and white mottled throat. Very fine, being of unusual beau- ty and oddity.....	4 00	30 00
HENRY GILLMAN —Deep salmon-scarlet, with pure white bands; the throat showing peculiar mottling.....	2 00	15 00
MARGINATA —Fine salmon, with crimson and white throat, each petal having a delicate margin of slate blue.....	2 50	20 00
MOTTLED GEM —Large, spreading flower, showing an unusually large throat, beautifully mot- tled white, violet and scarlet.....	3 00	25 00
MRS. BEECHER —Beautiful deep rosy crimson. Large, well opened flower, with pure white throat, freely marked and spotted.....	3 00	25 00
NEZINSCOTT —Bright blood scarlet, with deep velvety crimson-black blotches and white mottling in throat.....	3 50	30 00
ODDITY —Deep amaranth red, deeply suffused with purple-blue. Large distinct white marks and red and white mottled throat.....	3 00	25 00
SPLENDOR —A splendid large flower, of the softest, sweetest rose color. Large magenta stains with purple and white mottled throat.....	5 00	40 00
TORCH-LIGHT —Very large spike of large, light, flaming scarlet flowers. Throat mottled and spotted white and violet.....	5 00	40 00
WM. FALCONER —Spike of great length and flowers of enormous size. Beautiful clear light pink. Best of its color.....	3 50	30 00



OUR GRAND MIXED GLADIOLUS.

Our mixed Gladiolus are very fine indeed, being choice varieties only. All old and common ones have been discarded, and customers can depend upon having a large and magnificent variety of colors.

Mixtures of Gladiolus Gandevensis.

	Per 100	Per 1,000
All Colors, Mixed —First size, first quality.....	\$1 00	\$9 00
“ “ —Second size, first quality.....	75	6 00
Popular Cheap Mixture —This is composed of good sized bulbs, but not all strictly first size and a good range of colors. For general use we recommend it in preference to all first or all second size.....	80	7 00
Superb Seedlings —These are extra fine, producing the greatest possible range of colors.....	1 25	10 00

Our XXX Mixture.

This is a specially fine mixture, made up of over 100 fine named varieties and includes also a good per cent. of Childsi Hybrids. Just the stock for those who want only the very best.....

1 75 15 00

Mixtures of Gladiolus Childsi.

Mixed —First quality—Extra large and fine.....	1 75	16 00
Mixed —Second size, but good, flowering bulbs.....	1 25	10 00
Seedlings —Fine Mixed—Good sized bulbs from carefully hybridized seed.....	3 00	25 00

Mixtures of Lemoine's Gladiolus.

First Size, First Quality —A splendid range of colors.....	1 50	10 00
Second Size, “ —All flowering bulbs.....	1 00	8 00
Seedlings	2 00	12 00

Groff's Hybrids.

A magnificent range of rich colors; a highly prized strain, Hybrids Mixed —First size, finest quality.....	1 00	\$9 00
“ “ —Second.....	75	6 00

Mixtures Under Separate Colors G. Gandevensis.

These are very choice and absolutely true to color. We call special attention to our EXTRA WHITE and LIGHT. They are extra fine.

Extra White and Light varieties, mixed, all first class, best named sorts, including Snow White.....	3 00	25 00
White and Light varieties, mixed superb.....	1 50	12 00
Scarlet and Red —Extra fine scarlet and red.....	1 00	8 00
Pink —Fine pink and rose shades.....	1 25	12 00
Yellow and Orange —Best yellow colors.....	3 50	30 00
Striped and Variegated —Extra fine.....	2 25	20 00
Scarlet, White Throat —Extra fine, mixed.....	2 00	16 00

GLADIOLUS CHILDSI.

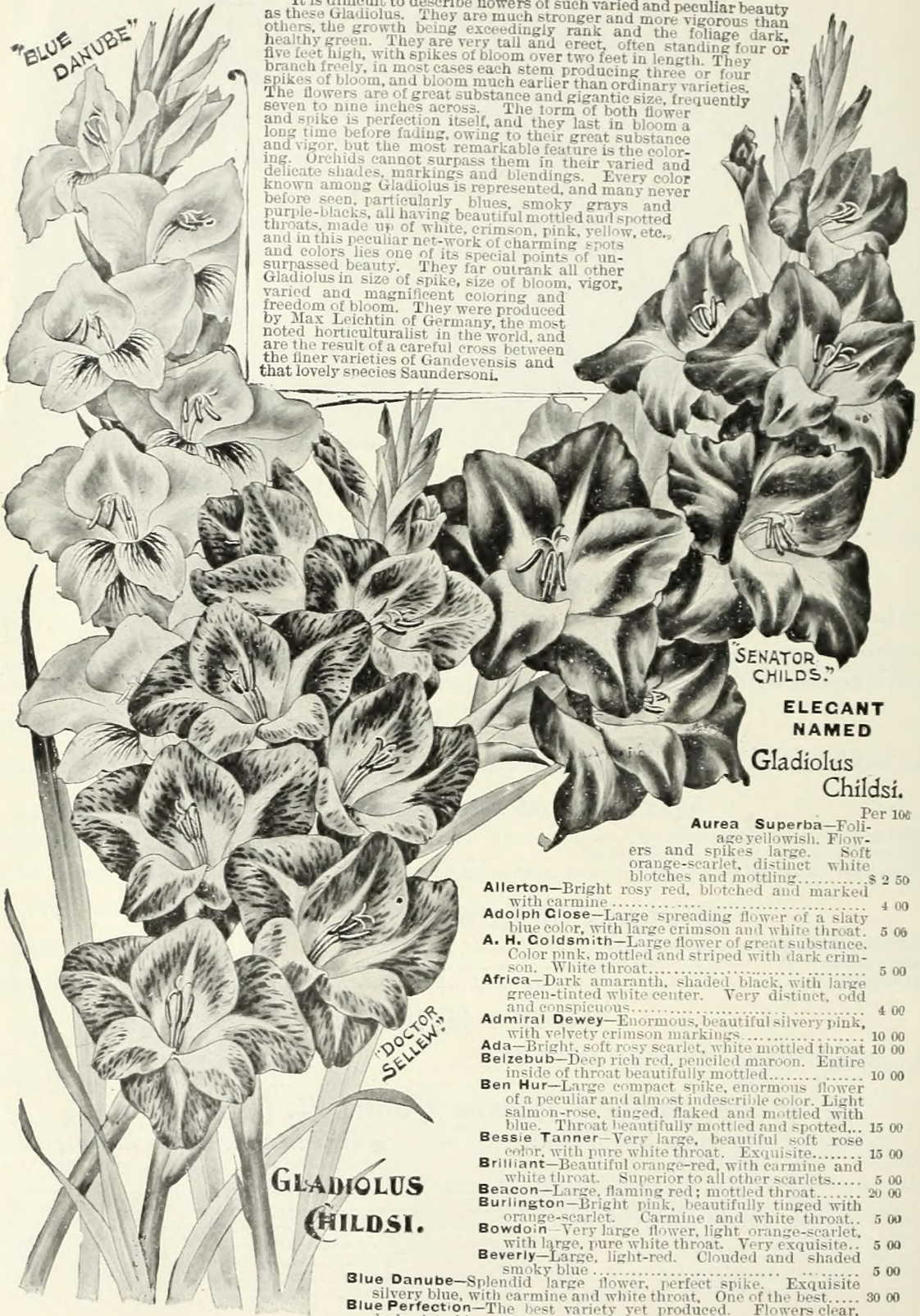
It is difficult to describe flowers of such varied and peculiar beauty as these Gladiolus. They are much stronger and more vigorous than others, the growth being exceedingly rank and the foliage dark, healthy green. They are very tall and erect, often standing four or five feet high, with spikes of bloom over two feet in length. They branch freely, in most cases each stem producing three or four spikes of bloom, and bloom much earlier than ordinary varieties. The flowers are of great substance and gigantic size, frequently seven to nine inches across. The form of both flower and spike is perfection itself, and they last in bloom a long time before fading, owing to their great substance and vigor, but the most remarkable feature is the coloring. Orchids cannot surpass them in their varied and delicate shades, markings and blendings. Every color known among Gladiolus is represented, and many never before seen, particularly blues, smoky grays and purple-blacks, all having beautiful mottled and spotted throats, made up of white, crimson, pink, yellow, etc., and in this peculiar net-work of charming spots and colors lies one of its special points of unsurpassed beauty. They far outrank all other Gladiolus in size of spike, size of bloom, vigor, varied and magnificent coloring and freedom of bloom. They were produced by Max Leichtlin of Germany, the most noted horticulturalist in the world, and are the result of a careful cross between the finer varieties of *Gandevensis* and that lovely species *Saundersoni*.

"BLUE DANUBE"

"SENATOR CHILDS."

ELEGANT NAMED

Gladiolus Childsi.



"DOCTOR SELLEW."

GLADIOLUS CHILDSI.

Aurea Superba—Foliage yellowish. Flowers and spikes large. Soft orange-scarlet, distinct white blotches and mottling. Per 100 \$ 2 50

- Allerton—Bright rosy red, blotched and marked with carmine. 4 00
- Adolph Close—Large spreading flower of a slaty blue color, with large crimson and white throat. 5 06
- A. H. Goldsmith—Large flower of great substance. Color pink, mottled and striped with dark crimson. White throat. 5 00
- Africa—Dark amaranth, shaded black, with large green-tinted white center. Very distinct, odd and conspicuous. 4 00
- Admiral Dewey—Enormous, beautiful silvery pink, with velvety crimson markings. 10 00
- Ada—Bright, soft rosy scarlet, white mottled throat 10 00
- Belzebub—Deep rich red, penciled maroon. Entire inside of throat beautifully mottled. 10 00
- Ben Hur—Large compact spike, enormous flower of a peculiar and almost indescribable color. Light salmon-rose, tinged, flaked and mottled with blue. Throat beautifully mottled and spotted. 15 00
- Bessie Tanner—Very large, beautiful soft rose color, with pure white throat. Exquisite. 15 00
- Brilliant—Beautiful orange-red, with carmine and white throat. Superior to all other scarlets. 5 00
- Beacon—Large, flaming red; mottled throat. 20 00
- Burlington—Bright pink, beautifully tinged with orange-scarlet. Carmine and white throat. 5 00
- Bowdoin—Very large flower, light orange-scarlet, with large, pure white throat. Very exquisite. 5 00
- Beverly—Large, light-red. Clouded and shaded smoky blue. 5 00

- Blue Danube—Splendid large flower, perfect spike. Exquisite silvery blue, with carmine and white throat. One of the best. 30 00
- Blue Perfection—The best variety yet produced. Flowers clear, dark, slate-blue, with a distinct scarlet stripe in lower petals. 30 00
- Blanche—Large flowers, pure snow white, with but faint marks. 15 00

Capt. C. B. Tanner—Extra large and fine. Brilliant crimson and white freely mottled and intermixed.....\$20

ADMIRAL DEWEY.

OLYMPIA.



PRESIDENT MCKINLEY

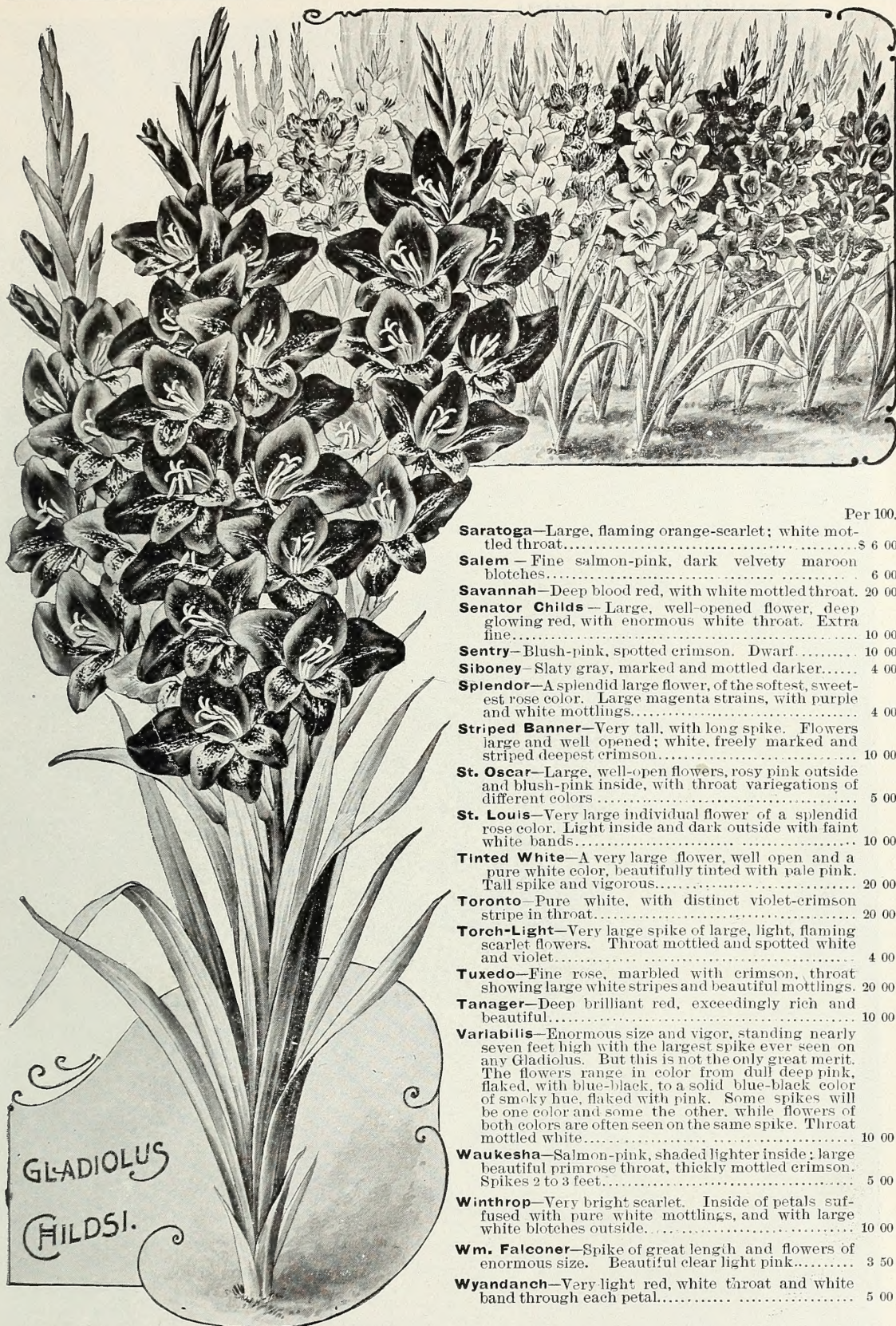
GLADIOLUS CHILDS.

- | | |
|---|---------|
| | Per 100 |
| Boston —Flaming orange-scarlet, with large white throat..... | \$ 4 00 |
| Buffalo —A fine mottling of different shades of red..... | 10 00 |
| Columbia —Light orange-scarlet, freely blotched and penciled with bluish-purple. Throat freely mottled | 2 50 |
| Cincinnati —Large pink, flaked bright orange; rich velvety amaranth throat..... | 10 00 |
| Colonel Wood —Bright scarlet, mottled throat..... | 20 00 |
| Dr. Sellow —Large spike and very large flower, of great substance. Deep, rich rosy crimson, slightly penciled darker. Center of petals and throat rayed white..... | 3 50 |
| Dr. Parkhurst —A spike nearly three feet in length and bearing upwards of 25 flowers. Dark, brilliant red, with an elegantly white mottled throat. A superb variety..... | 5 00 |
| Daisy Leland —Enormous spike and flower. Easily the largest flower produced by any Gladiolus. Bright rosy pink of exquisite loveliness. Spike gracefully curved.... | 15 00 |
| Deborah —Dark red, tinged with amaranth. Very large pure white throat and blotches, white band through petals..... | 4 00 |
| Dexter —Orange-red, with gray and carmine throat; mottled. | 10 00 |
| Duchess —Strong luxuriant grower, with immense spikes 2 feet in length, color peculiar mottling of light and dark salmon-reds, with white spotted and mottled throat..... | 10 00 |
| Edith —Light soft rose, striped crimson, yellow throat..... | 20 00 |
| Eva —Beautiful rose, shaded and marked with slate. Throat finely mottled with various colors..... | 5 00 |
| Erie —Bright, rosy carmine, with canary colored throat..... | 6 00 |
| Elaborate —Bright fiery red, freely penciled with brilliant amaranth and large white throat. Very fine..... | 5 00 |
| Ethel —Beautiful soft rose color, with white and crimson..... | 6 00 |
| Falconer's Favorite —Very strong, rank grower, enormous spike; flower large, deep ruby brilliant red, white band petals..... | 20 00 |
| Fedora —Large fine salmon-rose, with large mottled throat..... | 4 00 |
| Fantastic —Large flaming scarlet of a bright shade, freely penciled deep crimson..... | 10 00 |
| Governor McCormack —Extra large flower and truss. Beautiful rose, mottled with silvery gray and with violet and white mottled throat. Very fine, being of unusual beauty and oddity..... | 4 00 |
| Governor Saxton —Deep amaranth, almost black, striped, shaded and mottled with red. A very odd and conspicuous color..... | 10 00 |
| Gracilis —Slender, graceful spike with large flowers of a dull red color, margined and penciled with slate blue..... | 3 00 |
| Harlequin —White and dark crimson freely suffused, striped, mottled and spotted..... | 10 00 |
| Harry C. Parker —Large blossoms. Purplish red of various shades, striped and mottled. Light central bars and a throat finely striped violet, crimson and white..... | 20 00 |
| Helen —Blush white, striped crimson. Very delicate and pretty..... | 20 00 |
| Henry Cillman —Deep salmon-scarlet, with pure white bands; the throat showing peculiar mottling..... | 2 00 |
| I. S. Hendrickson —A beautiful and irregular mottling of white and bright deep pink; in some the pink, and in others the white, predominating. Flowers and spikes very large and fine..... | 30 00 |
| Hohokus —Large, flaming crimson; throat margined bright magenta..... | 3 00 |
| Indian Chief —Brilliant ruby red, clear and distinct white stripes through three lower petals..... | 10 00 |
| Irene —Fine large flower and spike. Color a fine shade of pink freely flaked bright crimson..... | 20 00 |
| Jay —Compact spike; large open flower of great substance. Bright crimson-pink, flamed darker, throat mottled..... | 20 00 |

Kate—Blush white, with crimson blotched throat.....	Per 100. \$20 00
Keokuk—Deep, bright pink, clouded, tinted and spotted slate-blue.....	5 00
Kitty Leland—Bright rosy salmon, with orange tinge. Flower spike often as much as three feet in length, showing between twenty and thirty blossoms, which are of the largest size.....	10 00
Laei—Soft pink, with bright carmine throat, shaded orange and having a peculiar metallic lustre. Enormous.....	6 00
Little Blush—Dwarf habit, compact spike of blush white.....	4 00
Little Violet—Dwarf habit, compact spike of a pleasing lilac.....	4 00
Livonia—Light red, with white mottled throat.....	4 00
Lizzie—White, tinted blush; violet crimson throat.....	6 00
Lowell—Fine pink and carmine, beautifully striped like Eugene Scribe. Good substance.....	10 00
Marginata—Fine salmon, with crimson and white throat, each petal having a delicate margin of slate blue.....	3 00
Marguerethe—Large flower and spike. Bright red, freely marked, blotched and suffused with slate-blue.....	6 00
Middleboro—Salmon-pink, freely flaked and penciled with deep rose, and carmine mottled throat.....	3 00
Mottled Gem—Large, spreading flower, showing an unusually large throat, beautifully mottled white, violet and scarlet.....	3 00
Mohonk—A strong, rank grower, flowers of large size and great substance. Deep dark pink, with spotted throat, shaded orange and flaked with maroon.....	3 00
Mrs. Beecher—Beautiful deep rosy crimson. Large, well opened flower, with pure white throat, freely marked and spotted.....	3 00
Mrs. La Mance—White overspread with a slight lilac shadow, the mottling being purplish crimson.....	5 00
Mrs. R. A. Goldsmith—Large flower, fine spike. Soft delicate rose, shaded lighter. Pure white throat.....	10 06
Mrs. W. N. Bird—Beautiful lilac-rose, crimson-white mottlings in throat, and carmine marks. Extra fine.....	6 00
M. Zolar—Lilac rose, flamed slate.....	10 00
Nakomis—Soft pink, blotched and shaded with orange-white and crimson throat. Enormous spikes.....	5 00
Newark—Orange-red, with white and crimson mottled throat.....	5 00
Nezinscott—Bright blood scarlet, with deep, velvety crimson-black blotches and white mottlings in throat.....	3 50
Nilo—Amaranth red shaded purple, numerous blotched and flaked with slate, and beautiful, large, pure white center. Mottled and spotted with crimson.....	10 00
Norma Dee Childs—Extra large flower and spike. Color delicate white, softly penciled with rose, and with large sulphur yellow throat. Perfectly exquisite and distinct.....	20 00
Oddity—Deep amaranth red, deeply suffused with purple-blue. Large distinct white marks and red and white mottled throat.....	3 00
Old Oxford—Slaty crimson heavily clouded with blue. Large crimson and white mottled.....	10 00

Oriole—Lovely mottling of pink and gray, with beautiful yellow banded throat. Small flower, but exquisitely colored.....	Per 100. \$10 00
Olympia—Pure white, beautifully zoned with sulphur-yellow, slightly marked violet in throat.....	20 00
Pearl—Light rosy pink, beautifully tinged violet and having pure white bars through center of each petal.....	10 00
Peoria—Slaty lilac, with white and crimson throat.....	4 00
Perfect Beauty—Very large flower of a tinted white color beautifully spotted with magenta.....	10 00
Princeton—Large flaming red, with violet and white mottlings in throat, spikes of great length.....	5 00
Portland—Rosy-red, penciled darker, white mottled throat.....	6 00
Red Cap—Dwarf, pretty bright red.....	6 00
Rosendale—Lilac-rose, tinged slate-blue.....	10 00
Ruby—Very dark, deep ruby red, with bright violet and white mottled in throat. An exceedingly rich color.....	6 00
Sacramento—Deep, bright coral-scarlet, with white mottlings.....	10 00
Sandusky—Carmine red, penciled and flaked darker.....	5 00





- | | Per 100. |
|--|----------|
| Saratoga —Large, flaming orange-scarlet; white mottled throat..... | \$ 6 00 |
| Salem —Fine salmon-pink, dark velvety maroon blotches..... | 6 00 |
| Savannah —Deep blood red, with white mottled throat..... | 20 00 |
| Senator Childs —Large, well-opened flower, deep glowing red, with enormous white throat. Extra fine..... | 10 00 |
| Sentry —Blush-pink, spotted crimson. Dwarf..... | 10 00 |
| Siboney —Slaty gray, marked and mottled darker..... | 4 00 |
| Splendor —A splendid large flower, of the softest, sweetest rose color. Large magenta strains, with purple and white mottlings..... | 4 00 |
| Striped Banner —Very tall, with long spike. Flowers large and well opened; white, freely marked and striped deepest crimson..... | 10 00 |
| St. Oscar —Large, well-open flowers, rosy pink outside and blush-pink inside, with throat variegations of different colors..... | 5 00 |
| St. Louis —Very large individual flower of a splendid rose color. Light inside and dark outside with faint white bands..... | 10 00 |
| Tinted White —A very large flower, well open and a pure white color, beautifully tinted with pale pink. Tall spike and vigorous..... | 20 00 |
| Toronto —Pure white, with distinct violet-crimson stripe in throat..... | 20 00 |
| Torch-Light —Very large spike of large, light, flaming scarlet flowers. Throat mottled and spotted white and violet..... | 4 00 |
| Tuxedo —Fine rose, marbled with crimson, throat showing large white stripes and beautiful mottlings..... | 20 00 |
| Tanager —Deep brilliant red, exceedingly rich and beautiful..... | 10 00 |
| Variabilis —Enormous size and vigor, standing nearly seven feet high with the largest spike ever seen on any Gladiolus. But this is not the only great merit. The flowers range in color from dull deep pink, flaked, with blue-black, to a solid blue-black color of smoky hue, flaked with pink. Some spikes will be one color and some the other, while flowers of both colors are often seen on the same spike. Throat mottled white..... | 10 00 |
| Waukesha —Salmon-pink, shaded lighter inside; large beautiful primrose throat, thickly mottled crimson. Spikes 2 to 3 feet..... | 5 00 |
| Winthrop —Very bright scarlet. Inside of petals suffused with pure white mottlings, and with large white blotches outside..... | 10 00 |
| Wm. Falconer —Spike of great length and flowers of enormous size. Beautiful clear light pink..... | 3 50 |
| Wyandanch —Very light red, white throat and white band through each petal..... | 5 00 |

GLADIOLUS
CHILDSI.

Something Special.

EASTER GLADIOLUS.

This variety is so early flowering, and so well adapted to pot culture that it is a most available and beautiful flower for Easter. Pot bulbs about January first and 3 may be planted in a 5-inch pot. They will soon be up and growing and about Easter will show magnificent spikes of blooms. Color pure white with lemon tinge, and a large bright crimson center. Wonderfully showy and for early flowering outside it is the most valuable Gladiolus grown. \$2.50 per 100; \$20.00 per 1000.

FLORIDA.

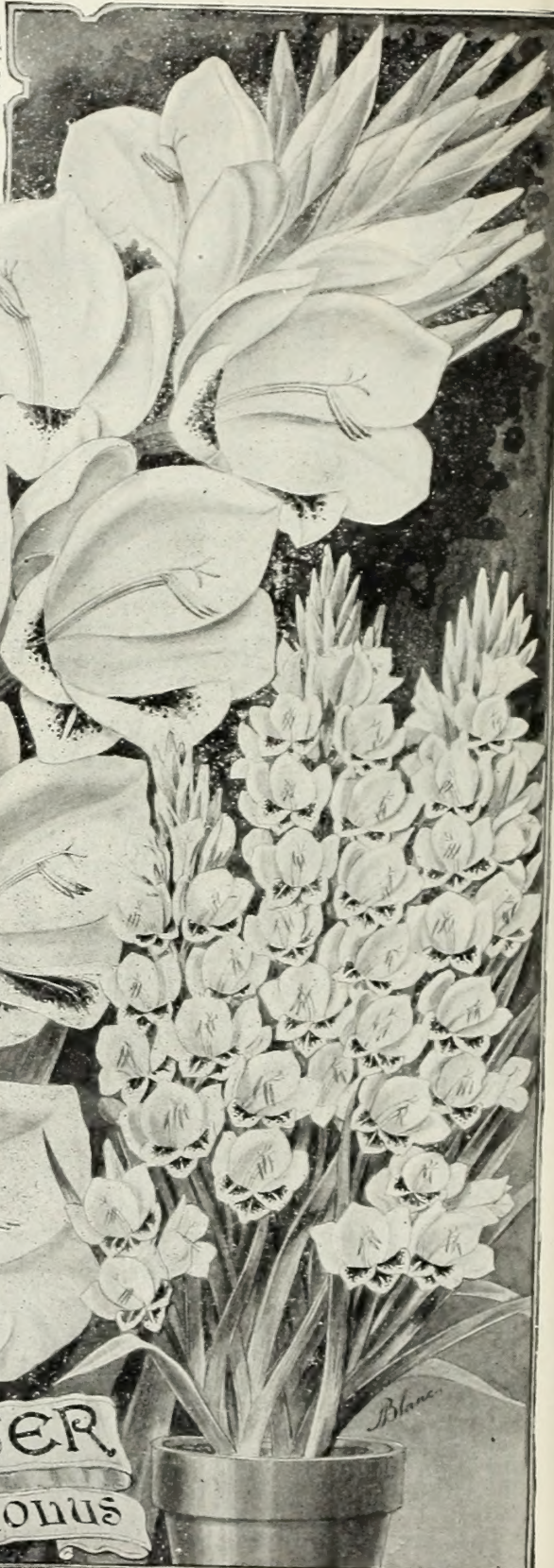
A very dark red Gladiolus, with splendid large blossoms of the Childsi type. Fully as early as the Easter Gladiolus, and makes a fine contrast with it on account of its deep, dark, rich color. \$2.00 per 100; \$15.00 per 1000.

We call special attention to the two following Gladiolus Childsi, on account of their fine colors and exceedingly low price. For a pure, brilliant scarlet, and a superb pink, they are unexcelled.

Nezinscott—Large flower and spike. Intense scarlet.

Wm. Falconer—Enormous spike, and a beautiful soft pink color. Vigorous grower.

SPECIAL PRICE—\$3.50 per 100;
 \$30.00 per 1,000; \$250 per 10,000.
Second Size—\$2.56 per 100; \$20.00 per 1,000; \$150 per 10,000.



**EASTER
 GLADIOLUS**



GLADIOLUS
 GANDAVENSIS
 "MAY."

MAY.

The Most Valuable Cheap
 Gladiolus in Cultivation.

As a Cut Flower Variety it is
 Unsurpassed.

This Gladioli being so very cheap, and so very handsome and valuable as a cut flower, should be most extensively planted by florists and others who grow for market. It makes a beautiful spike, compact and perfect, while the individual blossoms are of great substance and will stand shipping without bruising better than any other variety. Its color is one of the most attractive as well as one that is in greatest demand, being almost pure white, with markings of bright rosy crimson. It is a strong, healthy grower, and will give immense satisfaction in all localities and for all purposes. As an inexpensive variety we recommend it above all others with the possible exception of Ceres.

	Per 100	Per 1,000	Per 10,000
First Size Bulbs	\$2 50	16 00	150 00
Second " "	1 50	12 00	100 00



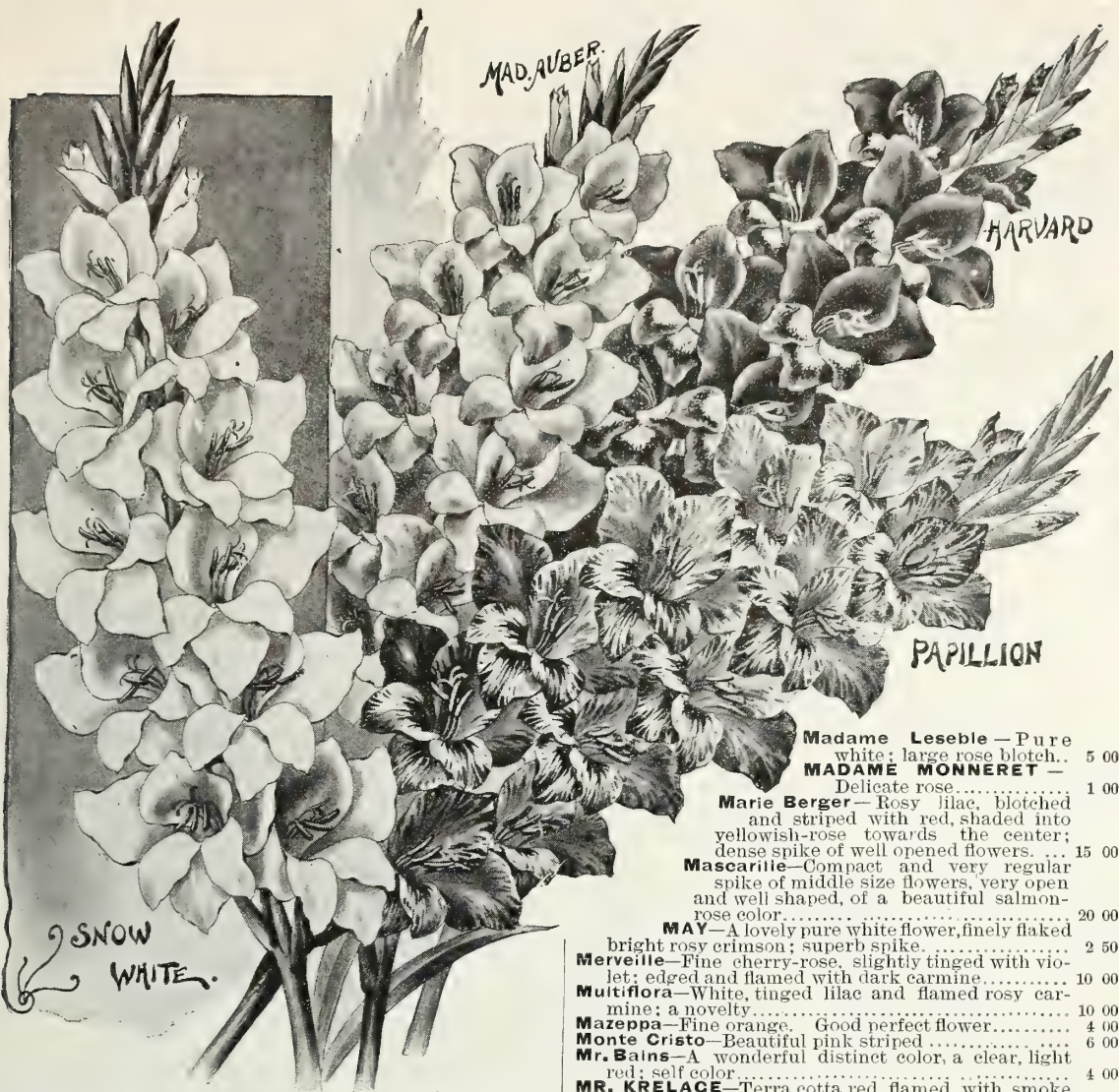
Gladiolus Gandevensis.

Best Named Varieties. 10 Bulbs Given at 100 Rates.

Varieties in large type are especially recommended.

	Per 100
Abricote —Large, rounded petals of a very fresh apricot-rose, tinted lilac.....	\$40 00
ADDISON —Dark amaranth, with white stripes.....	4 00
AJAX —Beautiful striped.....	3 00
AMALTHEE —Pure white with violet-red blotch; ground of the corolla velvety violet, the lower petals slightly tinted with lilac.....	4 00

AFRICAIN —Darkest crimson black; with a pure white blotch in the throat. The darkest and one of the finest colors; large flower and spike.....	6 00
Amitie —Large spike of large, fleshy rose-colored flowers, shaded with straw-color on the lower petals, streaked with purple, the edge flamed with bright rose.....	8 00
ANCELE —White, showy and effective.....	6 00
Archduchess Marie Christine —White, slightly tinged with lilac, flamed rosy carmine.....	5 00
AUGUSTA —Lovely pure white, with blue anthers.....	10 00
AURORE —Bright salmon-rose, striped orange, carmine and lilac; blotch cherry-rose, streaked violet.....	10 00
Big Medicine —Blush white, marked violet.....	10 00
Blondine —Tall, compact spike of large, straw-colored flowers, slightly streaked at the edges with rosy lilac; very delicate shade.....	75
BRENCHLEYENSIS —Vermillion-scarlet; fine old variety.....	10 00
CAMELEON —Compact truss of large saty-like flowers, flamed orange, with white bands down the middle of each petal; large, creamy white blotch streaked violet.....	4 00
Calypso —Flesh-colored rose, streaked rose and blotched carmine.....	5 00
Carnation —Fleshy white, profusely tinged at the edges with the richest carmine; lower petals blotched purplish carmine.....	8 00
CANARY BIRD —Finest yellow.....	1 00
CERES —Pure white, spotted with purplish rose.....	5 00
Chamont —Lilac, shaded with purple.....	5 00
CHAMPS DE MARS —Salfrino, distinct white blotch, bordered carmine.....	15 00
Chrysolora —Golden yellow, pure and distinct. The finest yellow variety.....	6 00
Ciceron —Fine lilac.....	6 00
Conquerant —Handsome spike of very large carmine, with a pure white blotch, and a well defined white band down each petal.....	6 00
Conquete —Large and fine flower of bright cherry-red, with a conspicuous pure white blotch, upper petals striped with delicate rose.....	8 00
Coralie —White, tinted with rose and yellow; flamed with bright rose, yellow blotch.....	5 00
Corsaire —Compact spike, large flowers of a very intense dark and velvety scarlet, and tinged with brown at the edge.....	5 00
Countess Craven —Rose, flaked carmine.....	10 00
Daphnis —Tall and compact spike of fine large, well shaped flowers, fine rosy salmon, blotched white.....	6 00
Duchess of Edinburgh —An eminent English culturist describes this variety as follows: "A flower of fine form and great substance; a plant of strong growth, attaining a height of six feet. Purplish rose, with a carmine strip on the lower divisions; without exception the finest variety ever sent out....."	4 00
Delicatissime —White, suffused with soft carmine-lilac, the pure white lower petals edged lilac.....	4 00
DIAMANT —Fleshy white, of a remarkable freshness; throat ivory-white, blotched and streaked carmine.....	4 00
DOCTOR HOGG —Mauve, suffused with rose; center pure white.....	6 00
Elizabeth —Dark rose, flamed bright carmine-purple; large purple-carmine blotch, with white stripes.....	4 00
EMMA THURSBY —White ground; carmine stripes through petals; blotch on the lower division.....	4 00
Eugene Ramey —Purplish amaranth, with a sheen of ivory-lilac; edges mottled slate.....	5 00
EUCENE SCRIBE —Flowers very large and wide; perfect tender rose, blazed carmine-red; extra fine.....	10 00
FATMA —Very large flowers of ivory-white ground, profusely striped and suffused with bright rosy salmon; violet blotch.....	10 00
FEU FOLLET —Well opened flowers, with ivory-white throat, richly tinted and striped with carmine at the edges of the sepals.....	30 00
FLAMBOYANT —Large flowers of fiery scarlet.....	5 00
Formosa —Rose, white center, extra fine.....	3 00
Fra Diavolo —Long, compact spike of large, bright orange-red flowers flushed violet-red at the edges of the sepals; large, pale yellow blotch.....	6 00
Fulton —Velvety vermilion.....	20 00
GRAND ROUGE —Elegant spike, and flower of the most perfect shape and intense scarlet, with small violet blotch in throat. The grandest of all scarlets.....	6 00
CEN. PHIL. SHERIDAN —Fiery red, white line running through each petal, and a large, pure white blotch on the lower division.....	6 00
CEN. SHERMAN —Large fine scarlet.....	6 00
Cloire de Fontainebleau —Large flowers of bright rosy carmine, striped red at the edges, white band in middle of sepal.....	6 00
Clory of Brightwood —Scarlet, with lemon throat.....	5 00
Culliver —Large, bright carmine flowers with conspicuous white bands in the middle of each petal; pale yellow blotch; streaked violet.....	5 00



Harvard—Brilliant solferino, white throat, bordered with a deep color. \$20 00
Hesperide—Profusely blotched and flaked bright rosy salmon on a pure white ground. 8 00
Horace Vernet—Large purple-red with white blotch. 5 00
ISAAC BUCHANAN—Very fine yellow. 3 50
JOHN BULL—White, slightly tinted with sulphur. 2 00
La Favorite—Rose, flamed carmine; lower petals yellow. 4 00
La France—Pure white flowers; slightly flamed with carmine toward the edges; large amaranth blotch passing to pure white. 5 00
LAMARCK (DE)—Cherry, lightly tinted with orange, blazed with red, center is very well lighted, with large, pure white stain. 2 50
Latone—Tall and very compact spike; fine flowers of a delicate rose with creamy white blotch and stripes. 4 00
Leander—Large flower of lilac color, beautifully shading off to carmine; distinct white band in each petal and white blotch. 8 00
Laura—Light orange red, tinged with carmine; white blotch. 4 00
LE POUSSIN—Light red, white blotch. 4 00
LACROSS—Fine spike; flower orange-scarlet, flaked maroon. 4 00
LORD BURLEIGH—Watermelon-red; light throat. 7 00
Loredan—Bright cherry-rose flowers, speckled with creamy white and slightly shaded with slate color at the edges of the petals. 10 00
Magnificus—Tall variety with handsome spikes of large flowers; round and open; cinnabar-red; fine white blotch; edged with violet. 20 00
Mandi—Large, deep, reddish-black. 10 00

Madame Leseble—Pure white; large rose blotch. 5 00
MADAME MONNERET—Delicate rose. 1 00
Marie Berger—Rosy lilac, blotched and striped with red, shaded into yellowish-rose towards the center; dense spike of well opened flowers. 15 00
Mascarille—Compact and very regular spike of middle size flowers, very open and well shaped, of a beautiful salmon-rose color. 20 00
MAY—A lovely pure white flower, finely flaked bright rosy crimson; superb spike. 2 50
Merveille—Fine cherry-rose, slightly tinged with violet; edged and flamed with dark carmine. 10 00
Multiflora—White, tinged lilac and flamed rosy carmine; a novelty. 10 00
Mazeppa—Fine orange. Good perfect flower. 4 00
Monte Cristo—Beautiful pink striped. 6 00
Mr. Bains—A wonderful distinct color, a clear, light red; self color. 4 00
MR. KRELACE—Terra cotta red, flamed with smoke color; white blotch, with carmine lining. 4 00
MRS. E. H. KRELACE—Fiery red; white blotch, with carmine, and white veins. 5 00
Navajo Chief—Fine spike and flower; clear rose, with carmine throat. 20 00
NAPOLEON III—Bright scarlet; white line on each petal. 75
Noemi—Light rosy lilac. 7 00
OCTOROON—A beautiful salmon-pink; very distinct. 6 00
Pactole—Beautiful yellow, slightly tinged with rose at the edges; blotch of dark shade. 5 00
Papiillon—A compact well-formed spike, with flowers of a yellow ground, conspicuously flaked and bordered with carmine. 6 00
Penelope—Blush-white; lower petals tinted yellow, streaked carmine. 5 00
Pollux. 8 00
Pres. Lincoln—Violet-blush, streaked darker. 8 00
Pepita—Bright golden yellow flowers, slightly striped carmine at the edges of the petals towards the end of the flower season. 6 00
Pyramide—Perfect spikes, boarder at the lower parts than at the top, large, well expanded orange-rose. 5 00
Phebus—Brilliant red; large pure white blotch. 6 00
Pheoan—Large cherry-red flowers, streaked and edged with violet; center band of petals white. 6 00
Princess of Wales—White, flamed with carmine-rose; deep carmine black. 6 00
Poserpine—Rosy white. 4 00
Pygmalion—Cherry-red, slightly flamed with a darker shade; pure white blotch, feathered violet; each petal has a white band. 4 00
Queen of the Fairies—Fine light sulphur-yellow, shaded. 10 00

	Per 100.
REINE BLANCHE —Pure white, dark carmine blotch.....	\$ 3 00
REVEREND BERKELEY —Light rose and tinged with violet-carmine, feathered white blotch.....	5 00
Richard Cœur de Lion —Fine spike of large flowers of a bright crimson-red color flamed and edged with garnet; lower petals spotted and blotched yellow....	6 00
Robert Fortune —Orange-lake, shading off to purple-crimson; veined white.....	4 00
Roi Leopold —Blush rose slightly suffused with orange and shaded deep currant-red; white blotch.....	5 00
Red Cloud —Salmon-pink, flamed with carmine, lighter center; outer portion of petals have a frosted look.....	15 00
SHAKESPEARE —White, very slightly suffused with carmine-rose; large rosy blotch.....	5 00
SNOW WHITE —All that need be said about this grand novelty is, that it is absolutely pure <i>snow-white</i> , the only pure white <i>Gladiolus</i> in existence. It also has large, well open flowers and an enormous spike of the most beautiful shape.....	10 00
Stanley —Rosy-salmon, flamed all over with the deepest rose color; small, rosy yellow blotch.....	10 00
Sunshine —Tall spike with 20 or more flowers. Very	

fine yellow.....	15 00
Sunrise —Very peculiar and striking flower, rosy pink flamed with carmine, white stripe through each petal; very large, distinct carmine blotch.....	20 00
Sunset —Lovely pink, blotched and flamed darker.....	10 00
Sultana —Bright satin-rose flamed with carmine; purple-carmine blotch.....	6 00
SYLPHIDE —Pure white, flamed carmine.....	5 00
Sylvia —White, slightly edged with delicate cherry-rose, throat very clear, perfectly shaped flowers....	6 00
Talma —Rosy carmine flowers flamed with bright carmine, and striped scarlet and pale violet.....	10 00
Teresita —Under petals of pure white, suffused with rose, and striped carmine at the edges.....	5 00
Thalia —White, flamed and streaked with carmine....	4 00
U. S. Crant —This superb variety is the largest flowering <i>Gladiolus</i> yet sent out; the enormous spikes run two feet and upwards in length, and are of firm, lasting substance; the color is quite distinct, ivory-white, beautifully veined with purplish blue.....	20 00
Van Spandonk —Fiery red; splendid.....	5 00
Victor Jacquemont —Compact spike of bright orange flowers, profusely flamed white scarlet.....	20 00

Gladiolus Novelties For 1904.

NEW VARIETIES OF

Gladiolus Childsi.

- Imperial Pink**—A tall, rank grower with a spike two to three feet in length and a flower of the very largest size; in this respect equaling or excelling *Daisy Leland*. Color, light salmon-pink, pencilled with a deeper shade. In both flower and spike this is one of the very largest and finest varieties in cultivation.
- Prince of India**—A seedling from *Ben Hur* with much the same style of coloring but much finer. Both flower and spike are also large and beautiful. The color varies from light to deep smoky-gray, many of the petals being zoned and banded; and freely pencilled with dark slaty-blue with a flaming crimson throat which is profusely mottled with white. A most remarkable mixture of colors and one of great oddity and beauty.
- Marion**—Pure white with slight rose tinge and a distinctly yellow shaded throat with crimson bars.
- Los Angeles**—Pure white, freely marked, pencilled and blotched with bright rosy-crimson. An exceedingly fine color and large flower.
- Lydia**—A fantastic mottling of pinkish white and deep rich crimson, in some flowers the white predominating and in others the crimson no two spikes being exactly alike.
- F. L. Oakley**—Bright salmon tinged scarlet, with a pure white center. Very fine and showy variety.
- Leonard Joerg**—A compact spike of finely shaped flowers, rich crimson and white mottled, with a yellow throat.
- Denvre**—Large, white tinged flower, freely marked and shaded with violet-rose.
- Superb**—Enormous flower and spike, one of the very largest; pink, flaked and striped with salmon pink, and blush.

- Cardinal**—Perfect flower and spike, very large and the brightest cleanest and most intense cardinal scarlet yet seen. Very rich and showy, and by all odds the very finest light-colored sort yet seen.
- Adolf Jaenicke**—Extra large, beautiful blush pink with bright violet and purple mottled centre. Very delicately and beautifully colored.
- Melrose**—White flaked pink, bright crimson centre. Very large and fine.
- Freak**—Flowers without stamen or anthers and often quite double. Rich maroon red, shaded slaty-blue.
- Price, \$3.00 per dozen. 1 each of the 13 for \$3.50.**

NEW VARIETIES OF

Gladiolus Gandavensis.

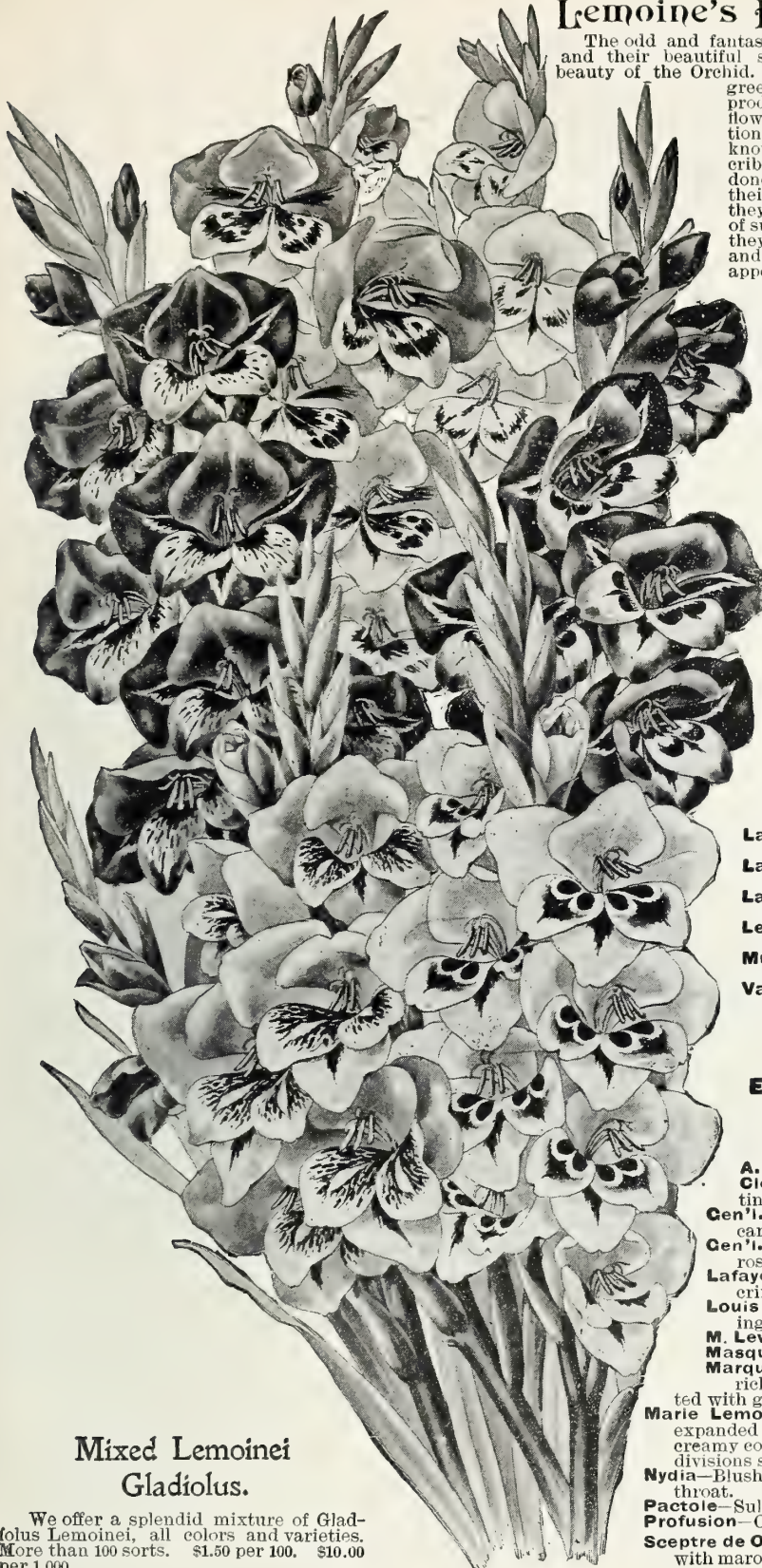
- Contrast**—Flowers of great substance and a beautiful compact spike of perfect form. Color, intense scarlet with a large, distinct, pure white center which is neither tinted or mottled. One of the most striking and beautiful *Gladiolus* ever introduced.
- Sulphur King**—Beautiful, clear, sulphur-yellow, finest and clearest of yellow sorts.
- Lemon Drop**—Light lemon with bright yellow throat. Finely tinted with crimson.
- Salmonia**—Good spike of flowers which are composed of varying shades of salmon-yellow.
- Ella**—Blush-pink, flaked slaty-blue. Very odd and pretty.
- Brilliancy**—Intense ruby scarlet. A rich and brilliant color.
- Harmonia**—Bright purple shaded crimson, and veined white, with a large snow white centre; very showy.
- Edna**—White and pink, freely striped, mottled and blotched
- Price, \$3.00 per dozen. 1 each of the 8 for \$2.50.**

15 Named Gladiolus Childsi, 6 Bulbs of Each for \$8.00.

To give our customers an opportunity of seeing and testing some of the finest and most varied sorts of *Gladiolus Childsi*, we will send 6 bulbs each of the following 15 grandest kinds for \$8.00—viz, *Adolf Glose*, *Admiral Dewey*, *Blanche*, *Ben Hur*, *Daisy Leland*, *Elaborate*, *Gov. McCormack*, *Lizzie*, *Laol*, *Orisole*, *Perfect Beauty*, *Red Cap*, *Ruby*, *Sandusky Variabilis*.

Lemoine's Hardy Gladiolus.

The odd and fantastic markings of these Gladiolus, and their beautiful shape, resemble the fascinating beauty of the Orchid. Yellow, crimson, white, brown, green, pink, etc., are blended together, producing an effect seen in no other flower. They are of recent introduction, therefore new and quite unknown. It is useless to attempt to describe their regal beauty, for it cannot be done. They must be seen. Besides their gay colors and odd markings, they have two very important points of superiority over other sorts. First, they bloom two or three weeks earlier and are in full perfection before others appear; and secondly, they are hardy and may be left in the ground over winter, from year to year, without lifting in autumn; yet we do not advise this plan, as we think it better to lift them in the fall and store them in the cellar, that they may be planted out in fresh, mellow soil in spring. They do well either way.



- Atlas**—Clear violet, large velvety maroon blotch.
- Admiral Pierre**—Large flowers, round, very open; dark carmine-red, lower divisions clouded maroon purple.
- Bejazit**—Lovely light pink, shading to delicate blush; velvety carmine blotches.
- Chas. Martel**—Rosy blush, intense large carmine blotch.
- De Cheville**—Salmon red, buff blotch.
- Edison**—A beautiful combination of many rich colors.
- Emile Lemoine**—Bright vermilion dotted gold.
- Ethel**—Beautiful blush pink.
- Entendard**—Light brick-red, with large canary and crimson blotches.
- F. Bergman**—Large, well-open flower orange-pink, with carmine stains.
- Incendiary**—Fiery red, large blotch of crimson-red on lower petals, small gold markings.
- La France**—Light salmon; velvety purple, blotched on yellow ground.
- Lamarck**—Salmon, crimson and yellow spots.
- Lamartine**—Rosy flesh, with large, bright maroon blotch.
- Leon Simon**—Dark purplish-red, yellow blotches.
- Murillo**—Bright claret-red, with velvety crimson throat.
- Vashti**—Creamy white, blotched carmine.

Price of above, \$2.00 per 100 ;
\$18.00 per 1,000.

EXTRA FINE and RARE SORTS.

\$5.00 per 100 ; \$40.00 per 1,000.

- A. Thiers**—Deep lilac-rose.
- Cleopatra**—Red, carmine blotches, tinged with yellow.
- Gen'l. Chanzy**—Flowers large. Red carmine, purple blotch.
- Gen'l. Faidherb**—Very large. Carmine rose, dark purplish red blotch.
- Lafayette**—Very large, yellowish salmon, crimson blotches.
- Louis Thiebaut**—Lilac-red, white markings.
- M. Levique**—Dark crimson.
- Masque de Fer**—Dark crimson blotch.
- Marquis de Saporta**—Large flowers rich coral, streaked with dull red spotted with gold.
- Marie Lemoine**—Large spike of fine, well-expanded flowers; upper divisions of a pale creamy color, flushed salmon-lilac, the lower divisions spotted violet and yellow.
- Nydia**—Blush pink, with large orange-scarlet throat.
- Pactole**—Sulphur-yellow, spotted black.
- Profusion**—Orange-scarlet, with yellow throat.
- Sceptre de Or**—Light and deep yellow shades, with maroon blotches.

Mixed Lemoinei Gladiolus.

We offer a splendid mixture of Gladiolus Lemoinei, all colors and varieties. More than 100 sorts. \$1.50 per 100. \$10.00 per 1,000.



Burbank's Giant Hybrid Amaryllis.

We are fortunate in having been able to secure from Mr. Luther Burbank of California, the first opportunity to introduce to the world his new hybrid Amaryllis, which is among the crowning glories of his life-work. Some twenty or thirty distinct varieties have been set aside for naming and are being propagated as fast as possible, but it will be a few years yet before there is sufficient stock of each to name and introduce. The bulbs offered at this time are a choice selection of mixed hybrids nearly as fine as the named ones to come later, many of them differing only in slight shades of color or variegation, and ranging in color from almost pure white to deep, dark crimson, with all intermediate shades, as well as stripes, variegations, and blended forms without limit.

This new race of Amaryllis produces a bulb of enormous size and strength which throws up broad, healthy foliage, and stout flower scapes, each producing blossoms of truly gigantic size. The flowers are often a foot or more across, larger than the Auratum Lily, and with colors which for purity and intensity are truly marvels. Mr. Burbank has spent many years in hybridizing and perfecting this strain, during which time they have been seen by horticultural experts from all over the world, and their great superiority over all other Amaryllis acknowledged, and reports to this effect have been published from time to time in the leading horticultural magazines.

Fine, large bulbs, \$10.00 per dozen.



Tuberous-Rooted Begonias.

The fashionable plant of the day, and richly does it deserve its honors, for in addition to very handsome foliage it bears a never-ending profusion of the most ravishingly beautiful flowers the whole summer, and then, with the coming of cold weather, very obligingly takes a nap until spring, asking no further care through the winter than to be packed in soil away from frost. This trait will be appreciated by the many people who have no spare windows to carry over tender bedding plants, yet dislike to be at the expense of buying a new lot each spring. This grand plant is a rival to the Gloxinias as a summer window or conservatory plant, and as strong a rival to the Geranium and Verbena as an outdoor bedding plant. The enormous size and intense brilliancy of the flowers astonish those who have never seen any but the ordinary house Begonia. The bulbs can be started from March to June and will soon be in full bloom. Give partial shade out of doors and protect from severe winds if possible. Our strain of both double and single is a very superior one, many of the flowers measuring 4 to 5 inches across,

Our Begonia Novelties.

The following extra fine new Tuberous-Rooted Begonias were offered for the first time last year. Both Seed and Bulbs are of our own growing.

- Cristata Mixed**—New crested or bearded strain of great beauty. \$1.00 per doz. \$8.00 per 100.
- Giant Crispa**—Enormous blossoms with elegantly fringed edges. Color, bright orange-scarlet. One of the grandest yet seen, and an entirely new departure. \$1.00 per doz. \$8.00 per 100.
- Childs' Giant Mixed**—Our own new strain of giant-flowering varieties. Greatly improved in size, shape and colors. The most magnificent strain of Tuberous-Rooted Begonias ever offered. Every bulb a select one, and seed comes true to this magnificent type. Fine bulbs \$1.00 per doz. \$8.00 per 100.
- Childs' Giant Snow-White**—Exquisite. \$1.50 per doz.
- “ “ **Scarlet**—Grand. \$1.50 per doz.



Giant Double Crispa Begonias

Our strain of double Tuberous Begonias is the finest we have ever seen. It is all our own stock upon which we have worked many years, and the blossoms are of immense size and grand colors. Fine Bulbs, \$1.50 per doz. \$10.00 per 100.

Choicest Begonia Seed.

- With good care seedlings bloom in from five to eight months' time. Per trade pkt.
- Tuberous-Rooted Hybrids, Single**—Mixed colors.....25
 - Tuberous-Rooted Hybrids, Double**—Mixed.....50
 - Tuberous-Rooted Hybrids, Childs' Crispa Giant**—Mixed.....50

The Best Cannas.

The following are among the very best of the improved flowering Cannas, and will give great satisfaction.

Aisaise—A vigorous grower, 4 feet, with large panicles of bloom. Spikes full, dense, and produced early and continuously. Color lovely creamy white, the nearest to a pure white yet seen among Cannas.

Coronet—Semi-dwarf; bright green foliage and large trusses of pure sulphur-yellow flowers. Absolutely a pure yellow.

Alphonse Bouvier—Rich, luxuriant foliage and enormous panicles of great wide-petaled flowers, which are of the darkest and richest blood vermilion color.

CHILDS' NEW CANNAS.



Paul Marquant—3½ feet high, fine healthy growers, flowers very large and borne in long panicles. Color very peculiar, being sort of a salmon shaded red.

Austria—Enormous flowers, beautiful canary-yellow with a silver hue, inside slightly dotted with red. Both in foliage and flower it is grand. 5 feet.

Burbank—Magnificent yellow, spotted. Eleganti foliage. Much the style of Austria. 4 feet.

Charles Henderson—Brilliant scarlet, free bloomer.

Florence Vaughan—The queen of the fancy spotted varieties. Flowers of enormous size, petals exceedingly broad and of perfect shape. Color, bright canary yellow thickly spotted with vivid scarlet. 4 feet.

F. F. Hunt—Fine large flower and beautiful compact truss. Color, pure canary yellow freely striped with scarlet. A grand new variety. 3 to 4 feet.

Paul Bruant—Trusses of the largest size. Flowers an intense brilliant orange-scarlet, with satiny surface.

Egandale—Dark foliage; bright scarlet blossoms. Very fine.

Robusta—Rank grower with broad, handsome foliage of a dark rich color. Used only for foliage effect.

Geoffrey St. Hilaire—Fine orange-scarlet flowers. Dark foliage. 5 feet.

PRICE—65c. per doz.; \$4.00 per 100; \$55.00 per 1,000

Improved Rainbow Canna.

This is the most magnificent novelty among foliage plants. Each leaf is beautifully variegated with pink, scarlet, orange, gray, green, etc. The foliage keeps its color all through the season; either for open ground or pots. In habit of growth it is superb. It hardly reaches the height of 3 feet, and is compact, with numerous leaves, which are wide, wavy and graceful. In this respect more charming than any other Canna. Aside from its beauty and usefulness as a garden ornament, it is still grander in pots for the window or porch, and makes a specimen plant which nothing, not even Fancy Caladiums, can surpass \$5.00 per 100.

Canna, Little Gem.

This is the dwarfiest Canna that has yet been introduced. Color bright orange-scarlet with a slight gold band about some of the petals. The plant grows only about eight to twelve inches high, but the panicles of bloom are as large and fine as those found on varieties growing much larger. It is, therefore, a perfect beauty as a pot plant, and for edging beds of tall-growing Cannas it is indispensable. A most valuable Canna. \$5.00 per 100.

Mixed Cannas.

For Large Show Beds.

A mixture of the finest dwarf large flowering kinds, which will go well together, and make a most magnificent bed or border of bright colors. We can thoroughly recommend this mixture, for we know that it will give the greatest results. \$3.00 per 100; \$25.00 per 1,000.

The Grand Everblooming Tritoma.

(TRITOMA PFITZERI.)

The greatest bedding plant ever introduced, surpassing the finest Cannas for attractiveness and brilliancy, equal to the Gladiolus as a cut flower and blooms incessantly from June until December, regardless of frost. Plants perfectly hardy in open ground all winter south of Philadelphia; further north they must be protected or wintered in a cellar like the ordinary Tritoma. Just bury the roots in sand; nothing more is required. Should be planted out early in spring, and will commence growth and bloom at once, growing larger and finer every day. Plants show from 6 to 20 grand flower stalks all the time, each holding at a height of 3 to 4 feet, a great cluster of flame-colored flowers of indescribable beauty and brilliancy. Each cluster keeps perfect several weeks, and when it fades, 2 or 3 more are ready to take its place. Fall frosts do not kill it or stop its blooming, and it is as brilliant as ever long after all other garden flowers have been killed. For cutting it is unsurpassed, and the beautiful long spikes keep several weeks in water. Without a single exception, it is the most desirable garden flower. It has created a sensation in the New York cut-flower market, and will be a great factor among cut flowers in future.

This is hardy here in the open ground over winter.

Strong plants, \$7.00 per 100; \$60.00 per 1,000.



Musafolia



New Foliage Canna, Musafolia.

This is the finest foliage Canna yet seen, with enormous Musa-like leaves, 3x5 feet of a dark green, bronze-tinged color, the edge of the leaves being beautifully banded with bronze-purple. In size and beauty of foliage it is a revelation, and makes a clump or single specimen plant for the lawn which no other foliage plant can approach. It is a seedling of the well known Robusta, but with foliage twice as large as well as more graceful and wavy. Attains a height of 8 feet, beautiful and symmetrical at every stage of growth.

\$3.00 per 100; \$25.00 per 1,000.



CHLIDANTHUS FRAGRANS

Chlidanthus Fragrans.

NOVEL, BEAUTIFUL AND FRAGRANT.

The blooming of this bulb with anyone is a revelation of beauty. It is much like an Amaryllis, with a strong bulb, which starts growth and bloom as soon as potted. The flowers are borne in clusters of 4 to 6 and are in color the brightest golden yellow, and such fragrance! Strong and delicious without being in any way rank or offensive as is the case with many highly scented flowers. Two or three spikes of these exquisite large yellow blossoms

are produced at each blooming period. Pot the bulbs up at any time winter or spring and they will soon be in bloom. For open ground culture, where they bloom finely, treat like *Gladolus*. \$2.00 per 100; \$15.00 per 1000.



Grand New Callas.

With the exception of the Spotted Calla these are all new and they are certainly very fine. Many so called Yellow Callas on the market are worthless.

Yellow Calla—(*Calla Hastata*)—Is one of the rarest and most eagerly sought of all bulbs. They should be potted in the spring and they will start growth at once and commence blooming in a short time. The bulbs are strong and send up numerous flowers, which are a bright golden yellow with black center. The color is one of the most beautiful shades of yellow seen among flowers, and the jet black center lends to the blossoms a peculiar charm. Bulbs are very scarce, and a year or two ago sold at \$1.50 each. This is the true large flowering golden yellow variety. \$10.00 per 100.

Elliottiana—This is the great new Yellow Calla of marvelous beauty. Flowers very large and of the brightest golden yellow. Leaves beautifully spotted with white. Sold last year at \$5.00 each. We have a large stock and can offer it at the very low price of \$75.00 per 100.

Rhemanni—Another new Calla which has created a sensation in Europe and sold as high as ten dollars each. It is a strong, free grower with large blossoms which are of a fine pink color. \$15.00 per 100.

Calla Pentlandi—The newest of the Yellow Callas, and said to be the darkest and richest in color of them all. Its flowers are large and widely open and in all respects a glorious thing. Sells in Europe at \$10 each and is very scarce. We have only a few hundred bulbs, but they are of large flowering size. \$10.00 per dozen.

Spotted Calla—The leaves of this beautiful Calla are deep green with numerous white spots, which give the plants a magnificent appearance. The flowers are pure white, with a black center and very beautiful. \$3.00 and \$4.00 per 100 according to size.

Calla Ethiopica Var.

Dwarf Everblooming Calla—This is of a dwarf habit and does not grow tall and scraggly like the old variety but is strong and compact, with a great abundance of lustrous dark green foliage. It is a true everbloomer, its flowers appearing in great abundance both summer and winter when grown in pots, or it will bloom profusely all summer long in open ground, and being potted in September will continue blooming without intermission all winter. The same plant will grow and bloom for years without once ceasing. Green plants, \$8.00 per 100.

Calla Fragrans—Like the Everblooming Calla but with a pronounced and very agreeable fragrance. Originated by Luther Burbank. Green plants, \$8.00 per 100.

Calla Little Gem—Only a few inches in height, Fine for small pots. \$5.00 per 100.



CALLA FRAGRANS.



Fancy Caladiums.

Easy to grow in summer, either in beds or pots. For piazza or summer conservatory decoration they are unrivaled. Their beautifully shaped and glossy foliage is elegantly variegated in the most telling manner. One, perhaps, is regularly dotted with round raised spots of white, another is ribbed and veined with pink or scarlet, or yellow, while still another is flashed and marbled with white or marked with delicate and vivid colors as to make them as showy as great and peculiar flowers. The smaller leaves do not always show all the fine colors of the large ones which come later. Our collection is superb, comprising over 80 named kinds.

NAMED VARIETIES.

We have a collection of about 40 of the very finest named sorts ever introduced. Price per doz., \$1.00. Per 100, \$8.00.

MIXED VARIETIES.

Fine named varieties, mixed, \$5.00 per 100.

MIXED SEEDLINGS.

We grow thousands of Seedling Fancy Caladiums, and from these have made a careful selection of the most odd, beautiful and brightest-colored sorts which we here offer as an extra fine lot of mixed seedlings. Many of them are equal in beauty to the best named sorts, and among them one will get the greatest variety of blended colors. Price for fine bulbs, \$6.50 per 100.

GRAND NEW SEEDLINGS.

The following 4 grand Fancy Caladiums are our own seedlings, and we believe they are the most magnificent sorts in cultivation to-day. They must be seen to be appreciated. **White Flag**—Immense leaf, pure white with transparent blue-tinted blotches.

Torch Light—Fine light red bordered with bottle-green, veined with deep crimson.

Elaborate—Bright red, veined crimson. Large, wide mottled border of yellow tinted white. Extra fine

Fascination—Pink, freely veined with deep crimson, dark-green mottled edge. Perfectly grand.

Price \$2.00 per dozen.

FANCY CALADIUM SEED.

Fancy Caladiums flower and seed only in June. The seed ripens in a week or two from the time the plant blooms and is usually gathered and sown at once, as it will not hold its vitality for more than two or three months. We grow a large variety of the finest sorts for seed, crossing and re-crossing them by hand fertilization. From these we get our new magnificent seedlings. We can offer this seed to be sent out in June or early in July as soon as the crop ripens, and it should be sown very soon after it is received. The young seedling plants are not at all difficult to raise.

Per 1000 seeds, \$5.00.

SUPERB DAHLIAS.

We have a large stock of choice named Dahlias which we offer as follows:

Named Sorts.

We have some 50 named sorts which we can supply our selection of kinds, (but will give colors desired), large field grown roots, undivided, \$10.00 per 100. Divided roots, \$4.00 per 100,

New Cactus Dahlias.

These are not the ordinary form of Cactus Dahlia, but a new strain with blossoms of enormous size, perfectly formed and double to the center. Some have wide, flat petals, others have quilled petals, while others have petals quilled at the end and flat in the middle. Many of them remind one of magnificent Japanese Chrysanthemums. In color they present a varied brilliancy and richness not before seen in Dahlias; intense scarlets, delicate pinks, snow-whites and tinted forms, straw color, lemon and orange-yellow, dark maroons, almost black, with a velvety texture that is certainly wonderful; striped, blotched and variegated; in fact all colors and combinations,

Of these glorious Dahlias we have about 50 named kinds. Price, field roots, divided, \$10.00 per 100.

Mixed Dahlias.

Large field grown roots of finest sorts, mixed, \$5.00 per 100. Divided roots half price.





Childs' Giant Gloxinia.

The grandest of all summer-blooming bulbs for decoration of the window, veranda or conservatory in summer. Everyone is spellbound at their regal beauty. They are no trouble at all to grow, and bloom constantly until autumn, when they should be allowed to die down, and the pots kept dry in some warm place until next spring, when the bulbs can be started into growth again. Our new Gloxinias are great improvements over the older sorts, with large, luxuriant leaves that recurve in such a manner as to conceal the pot they grow in, and erect, large-throated wide-lobed flowers borne above the foliage like a floral crown. These flowers are very large and satin-like and of the most exquisite coloring, soft, clear or brilliant, sometimes self-colored but more often tinted, spotted or edged with contrasting colors, but always rich and beautiful.

Childs' Giant—Originated by us, and is a flower of most extraordinary size and widely open. In shape it is perfect, many of the petals being beautifully frilled and limbed. Colors rich and veined, some of the combinations being unique and beautiful beyond description. Plants vigorous, with enormous leaves, and often as many as 40 or 50 of these gigantic flowers showing at one time on a plant. A regal giant, and perfectly exquisite. \$1.00 per dozen, \$8.00 per 100.

Giant **Coliath**—Blue and white.
 " **Leopard**—Pink spotted.
 " **Snow Queen**—White.
 " **Othello**—Purple-black.
 " **Venosa**—Various colors, veined.
 " **Tricolor Spotted**—All spotted.
 " **Queens Scarlet**—Intense scarlet.
 " **Cattleya**—New carmine edged white and throat.
 " **Cyclope**—Purple, white edge.

Above fine varieties \$1.50 per dozen, \$10.00 per 100.

Gloxinia Seed.

Gloxinias grow well from seed, and, if given good care will bloom in five months from the time of sowing seed, giving large and beautiful blossoms. Our seed is extra choice.

Coliath—Enormous size, opening flat and wide. Outside pearly white, inside ultramarine blue with wide white border, dark, rich velvety. A grander flower it will be hard to find.

Leopard—Light delicate pink, thickly spotted scarlet.

Snow Queen—The largest and finest of all pure white sorts. A flower for the gods. Vigorous, and great bloomer.

Scarlet Queen—Large, wide-open flowers of a dark, deep, rich crimson-scarlet. The finest and brightest colored sort.

Othello—Deep, rich purple-black. Magnificent; darkest color yet seen in Gloxinias.

Tricolor Spotted—Various colors, all beautifully tigered and spotted. Exceedingly handsome.

Venosa—Various colors all charmingly veined, and many also spotted.

Choicest Seed of above grand varieties, 50c. per trade pkt.



GLOXINIA TUBIFLORA.

This is far different from ordinary Gloxinias, being a plant of erect branching habit, which is propagated by cuttings but producing a strong bulb or tuber. Flower stems rise to the height of 2 feet, each bearing several large pure white blossoms 4 inches in length, and of a peculiar and fascinating fragrance. It is a hardy and easily grown pot or garden plant, good for any situation, blooming freely, and always attracting great attention by its oddity, novelty and remarkable beauty and peculiar fragrance. In every way it is a novel and grand plant for either indoor or outdoor culture.

Strong Tubers, \$5.00 per 100



Giant California Tigridias.

We are introducing a strain of California grown Tigridias the bulbs of which are VERY LARGE, SOLID AND VIGOROUS. These fine bulbs keep perfectly well over winter under ordinary conditions, whereas smaller ones dry out and decay. They also make a remarkably strong and vigorous growth, blooming early and with remarkable profusion. We are sure that those who try these giant California bulbs will never plant or sell any other, they are so very much more satisfactory in every respect, and we hope all our customers will try at least a dozen as a sample.

Canariensis—Bright yellow.

Conchiflora—Yellow spotted.

Speciosa—Deep red, spotted purple.

Lilacia—Brilliant violet crimson.

Grandiflora Alba—White, crimson spots.

California Hybrids, Mixed (Burbank)—Grand new strain of mammoth size, and a great variety of splendid colors. These will give unbounded satisfaction. Bulbs of great size.

Price, 40c. per doz.; \$2.00 per 100; \$18.00 per 1000.

Lilies.

All the Lily bulbs we offer are of our own growing, and they may be relied upon for health, vigor and free growing qualities. Our stock of *L. tenuifolium* is very large and fine. doz. 100

- Auratum**—(THE GOLDEN BANDED LILY OF JAPAN)—We can say that this is the grandest of all Lilies, and certainly the most popular. 75 6 00
- Canadense**—Lovely nodding blossoms, bell-shaped, yellow spotted black. 60 4 00
- Elegans**—Fine mixed colors. 60 4 00
- Elegans Bicolor**—Bright red, flushed orange; very showy and large. 75 5 00
- Elegans Painted Chief**—Bright flame color. 1 00 9 00
- Elegans Robusta**—Magnificent large flower; orange spotted black. 75 5 00
- Elegans Aurora**—Deep rich orange, suffused scarlet. 1 00 9 00
- Longiflorum**—White, trumpet formed, very fragrant. A lovely Lily, being almost exactly like the Bermuda Easter Lily, but blooming a little later, and hardy. 60 4 00
- Pardalinum**—(LEOPARD LILY)—Rich scarlet and yellow flowers, spotted with rich brown. Robust and free flowering. A superb Lily, and one which will give the greatest possible satisfaction. Succeeds in all situations. 75 5 00
- Superbum**—Three to six feet high, flowers from five to forty, nodding; brilliant orange-red. Blooms in July. 60 4 00
- Tigrinum fl. pl.**—(DOUBLE TIGER)—This is a plant of stately habit, growing from 4 to 5 feet high; foliage is dark green and very long, bearing an immense number of double bright orange-red flowers, spotted with black. 50 3 00
- Tigrinum, Splendens**—Improved Tiger Lily. 40 3 00
- Umbellatum**—One of the very best, blooming in June or July, with very large perfect flowers. Colors range from black-red, through all the shades of crimson, rose, yellow, buff, apricot, etc., many being finely spotted and variegated. 75 5 00
- Wallacei**—This Lily is very floriferous, each bulb throwing up from 4 to 6 flower stems, each one of which is crowned with 8 to 10 beautiful upright blossoms, of a delicate, bright apricot color. It is very perfect in form and a most desirable sort. 40 2 00

Grand Speciosum Lilies.

The Speciosums are the hardest, most robust and free-flowering of all Lilies, not omitting the old Tiger Lily, while in beauty they are second to none. The magnificence of their blossoms cannot be described.

- Rubrum**—Deep rose, freely spotted crimson and mottled white; perfectly exquisite. 75 6 00
- Melpomene**—Words cannot describe the beauty of this variety. Frosted white, spotted, clouded and bearded with pinkish crimson. Petals deeply recurved and widely bordered. 75 6 00
- Praecox**—Large, perfect and beautiful. Frosted white, with a tinge of blush at the top of petals. The blush-like fringe in each petal adds to its beauty. 75 6 00
- Monstruosum Album**—Broad, flat stems and immense heads of flowers, often fifty in a cluster. Pure snow white. 60 5 00
- Punctatum**—Fine white, with a delicate pink tinge and rosy spots. 90 8 00
- Henryi**—New and exceedingly rare. Tall, strong grower, producing flowers in great profusion of a fine apricot-yellow color. The yellow Speciosum. 6 00
- Opal**—We had thought that no Speciosum could exceed Melpomene, but this new Lily is even larger grander, and, if possible, more richly colored. Like the Opal, for which it is named, the eye drinks in its lovely tints with delight. To say that it is frosted, glistening white, delicately clouded and suffused with rosy blush and spotted with rosy scarlet, is to convey but a slight idea of its perfect loveliness. The deeply recurved petals are snowy white at the tip, gradually deepening in color to the base of each petal, which is blotched with a raised, moss-like fringe, which glistens like diamonds. The flower is very large. 4 00

Lilium Tenuifolium.

The lovely Coral Lily of Siberia. A great beauty. The brightest of all Lilies. Grows 20 inches high, with finely cut foliage, slender stems and beautiful shaped flowers of a brilliant coral-red. One ought to grow them by the dozen, they are so fine for cutting, and make such grand clumps for the lawn. Blooms very early. Having grown an enormous stock of this exquisite Lily we are prepared to offer it at the exceedingly low price of 60c. per dozen; \$5.00 per 100; \$40.00 per 1,000; \$350 per 10,000.



Zephyranthes, or Zephyr Flower.

The Zephyr flowers, or Fairy Lilies, are gems of rare beauty; and when planted either in pots or the open ground they produce very beautiful Lily-like flowers nearly all summer. Though some of the varieties are old, they are not generally known or seen in cultivation, owing to the fact that they have never been properly and thoroughly introduced. When once grown they are always grown, for they are one of the prettiest and easiest grown flowers it is possible to have. They are of a lovely section of the great and popular Amaryllis-family. For pot culture plant three or four in a 3 or 6-inch pot and they will bloom beautifully. For the garden plant in spring and lift them in the fall, like Gladiolus.

Rosea—Beautiful clear rose; flowers large and very handsome. One of the oldest and best; blooms all summer. Very scarce and seldom seen. \$2.00 per 100. \$15.00 per 1000.

Sulphurea (GIANT FLOWERED)—This produces flowers as large as large Amaryllis, and on stems 15 to 24 inches in height. One of the clearest and finest shades of yellow we ever saw. The shape of the flower is perfection itself. It is one of the choicest gems in the bulb line.

Andersoni—A little beauty, its flowers being smaller than the others; beautiful tulip-shaped, and orange-yellow in color. A free bloomer. \$3.00 per 100.

Candida Improved—Pure white and the freest bloomer of all, though not so large. \$1.50 per 100, \$10.00 per 1000.

Treata (AMARYLLIS)—A fine Zephyranthes-like blossom; pure white. \$1.50 per 100.



Childs' Tuberoses

The one flower the rich man must have and the poor cannot do without. We all love its massive spikes, thick, waxen, blooms of rich, creamy whiteness, and its deep delicious fragrance. How often has this sweet flower, that might have bloomed in paradise, been placed upon the cold forms of those whose spirit has gone to fairer fields. We have made our prices very low, that every flower lover may enjoy their peerless beauty. For open-ground culture plant about the middle of May. Give them rich soil, in full sun, and keep free from weeds and they will bloom finely. Plant a good big lot of them for cutting, and if you will pot those which are in bed about the time frost is expected, they will bloom elegantly in pots for a long time—often till Christmas.

Excelsior Pearl—Introduced by us twelve years ago. It is the finest bloomer of all Tuberoses; habit dwarf, flower stalks short, spikes and blossoms enormous in size, and very double and fragrant. The finest for pots as well as for the garden. Large select bulbs, \$1.00 per 100; \$9.00 per 1,000.

Excelsior Pearl, Second Size—60c. per 100; \$5.00 per 1,000.

New Variegated—The leaves of this variety are bordered with creamy white; flowers single but very large and of exquisite fragrance. Bulbs continue to grow and bloom year after year. It makes a most magnificent plant. It blooms several weeks earlier than the other sorts, which greatly adds to its value. \$1.50 per 100; \$14.00 per 1,000.

Single Orange-Scented—A fine sort bearing very early in the season, large spikes of beautiful single orange-like blossoms. Very fragrant. \$2.00 per 100.



THE GREAT ISMENE.

(*ISMENE CALATHENA GRANDIFLORA.*)

Having grown a Large Stock we are able to offer this Superb Bulb Very Cheaply.

Those who are familiar with the true Giant Ismene cannot say enough in praise of its beauty and purity. The flowers are of very large size, like an Amaryllis, novel form and of snowy whiteness, and are also exceedingly fragrant. It is really one of the most lovely of all the great Amaryllis tribe, having a peculiar grandeur which one can appreciate at sight, but cannot describe. Bulbs are large and strong and begin to flower in two or three weeks after planting, sending up tall flower stems, which bear several of its magnificent blossoms. As a pot plant it is grand, and as a garden bulb treated like a Gladiolus it is one of the choicest of all flowers. Do not fail to try it. It will more than please you for it is superior to the Bermuda Easter Lily as a flowering bulb. Strong flowering bulbs, \$6.00 per 100; \$50 per 1,000.

Hyacinthus Candicans.

A species of Hyacinth which blooms during August and September, grows three to five feet high, with spikes of pure white flowers two feet in length. The bulbs are large, round and solid, and throw up large flower stems which are gigantic spikes of thimble-shaped white blossoms. Planted in the spring they bloom in August, September and October, strong bulbs producing two, three and even four flower stems. A bed of a dozen or more bulbs produces a grand effect. A few planted in the center of a bed of Verbenas, Petunias, or other flowers make a beautiful display. They contrast elegantly with Gladiolus. Planted anywhere, singly or in clumps, they are magnificent. For a cemetery nothing can be more beautiful or appropriate, and nothing thrives better in any situation.

1-2 in. \$1.50 per 100; \$12.00 per 1,000.
2-3 in. \$2.00 per 100; \$15.00 per 1,000.

Summer-Flowering Oxalis.

No bulb is so valuable for edging the borders of walks or flower beds as the beautiful flowering Oxalis. When planted three inches apart they produce an unbroken row of elegant foliage and pretty flowers; and as they bloom very quickly after planting they furnish a neat and attractive border the whole season. They are also splendid when planted in a mass, and make a very showy bed. The bulbs which are the size of peas, or larger, can be planted the first of May, or perhaps earlier, and will be in bloom by the first of June. No flower is easier grown than this, as they are sure to succeed in all soils and situations. They are also charming when grown in pots, and make a very attractive mass of fine foliage and gay flowers. They can be planted in this way at any time during the winter or spring, and will commence blooming at once.

Dieppi—Pure white; very fine.

Lasandria—Fine rosy pink, beautiful cut foliage.

Shamrock—Lovely clover-like foliage and pink blossoms.

Mixed Colors—Several colors.

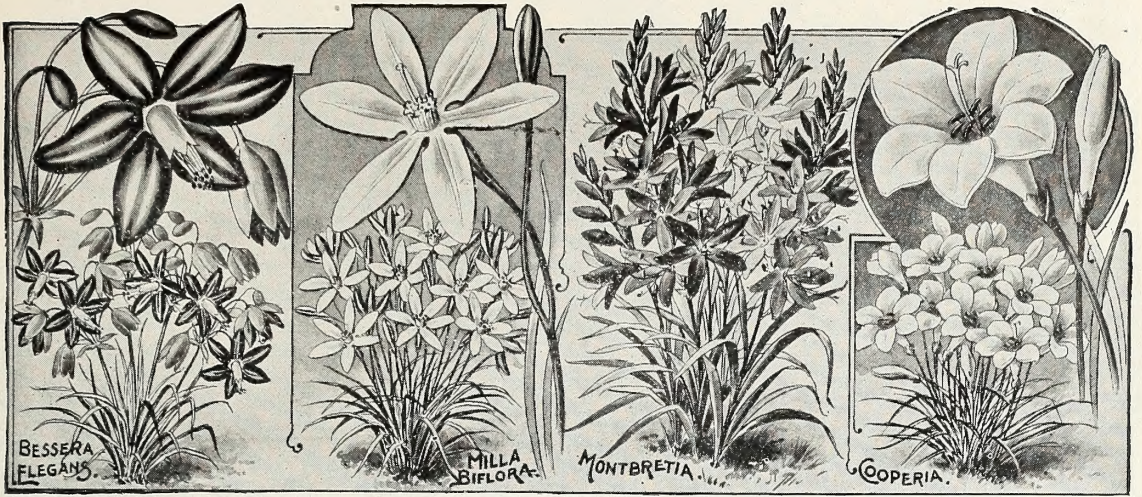
20c. per 100; \$1.00 per 1,000.

Mammoth Bulbs—We can supply mammoth-sized bulbs of the above Oxalis, nearly as large as Gladiolus, and which will produce a wonderful profusion of bloom. \$1.50; per 100; \$12.00 per 1,000.

Phrynium Variegatum.

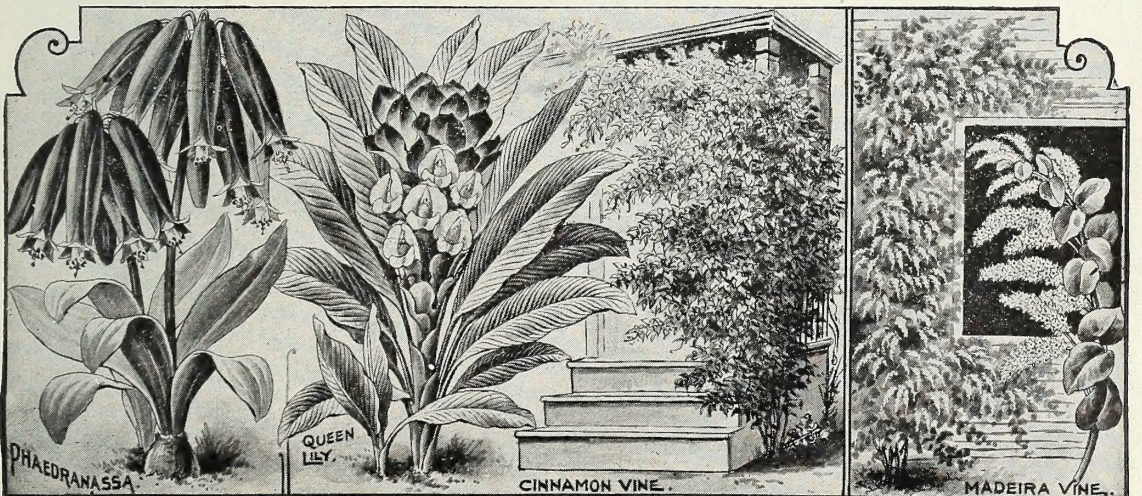
An elegant pot or bedding plant which is faithfully depicted in the accompanying cut, though it conveys no idea of exquisite variegations of the leaves. Its manner of growth is much like that of a Canna, the leaves born on erect foot-stalks with spreading blades of oblong-lanceolate form. They are bright pale-green, beautifully variegated with white and gold, the variegation being extremely diversified. In some leaves the whole area is white, in others only one-half, in others again it is confined to the interspaces between two or three of the ribs, while in others it is reduced to a few stripes. It is very free growing and one of the most ornamental plants imaginable. As a pot plant it surpasses the best Palms, and can be compared only to some of the rare *Dracenas*. As a bedding plant, planted out in full sun, it is simply elegant, making a specimen which for ornamental foliage, has no equal. It is a free, vigorous and easy grower, succeeding in all situations and under all conditions. \$6.00 per 100; \$50. per 1,000.





MISCELLANEOUS BULBS.

	Per doz.	Per 100.	Per 1000.
AMORPHOPHALLUS SIMLENSE	\$ 60	\$ 5 00	\$40 00
APIOS TUBEROSA	25	1 50	10 00
BESSERA ELEGANS	35	2 50	20 00
CINNAMON VINE, Roots	60	2 50	20 00
" " Bulblets	15	50	4 00
COOPERIA DRUMMONDI	35	2 50	20 00
" Pedunculata	25	2 50	20 00
CALADIUM Esculentum, 7 to 9 inches	80	4 00	35 00
" " 5 to 7 inches	40	2 00	17 00
MADEIRA VINE	25	1 00	8 00
MONTBRETIA, Fine Mixed	20	1 00	8 00
MILLA BIFLORA —The flowers are pure waxy-white, two inches in diameter, star-shaped, and usually in pairs on long slender stems. It is beautiful, especially for cutting, as it lasts a long time in water. Too much praise cannot be bestowed upon this lovely flower. It pleases everyone and should be grown very largely. This charming flower is exceedingly popular for florists' use, and the demand for the blossoms is great. The blossoms frequently last two weeks when cut and placed in vases of water.	35	2 50	20 00
PHADRANASSA GLORIOSA	35	3 00	25 00
QUEEN LILY	50	5 00	45 00





VARIEGATED DAY LILY.



GIANT PAEONY

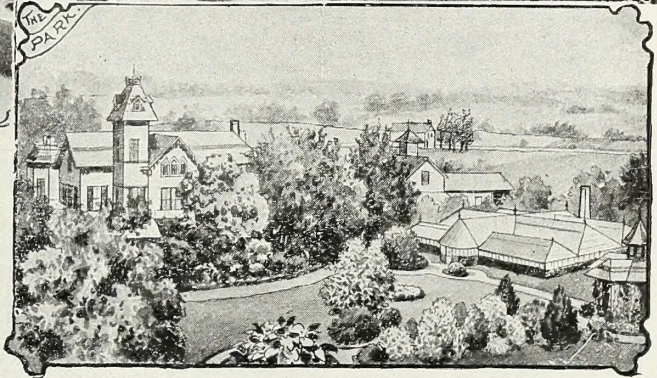
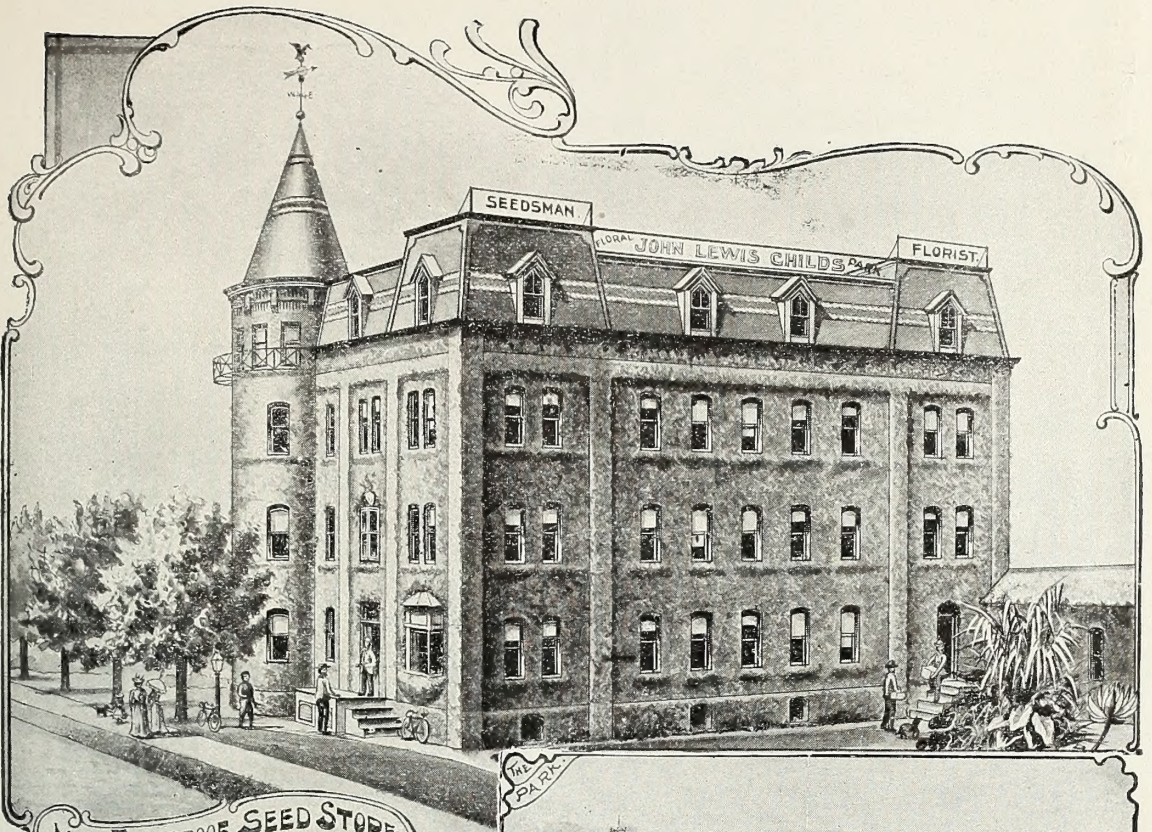


HEMEROCALLIS.

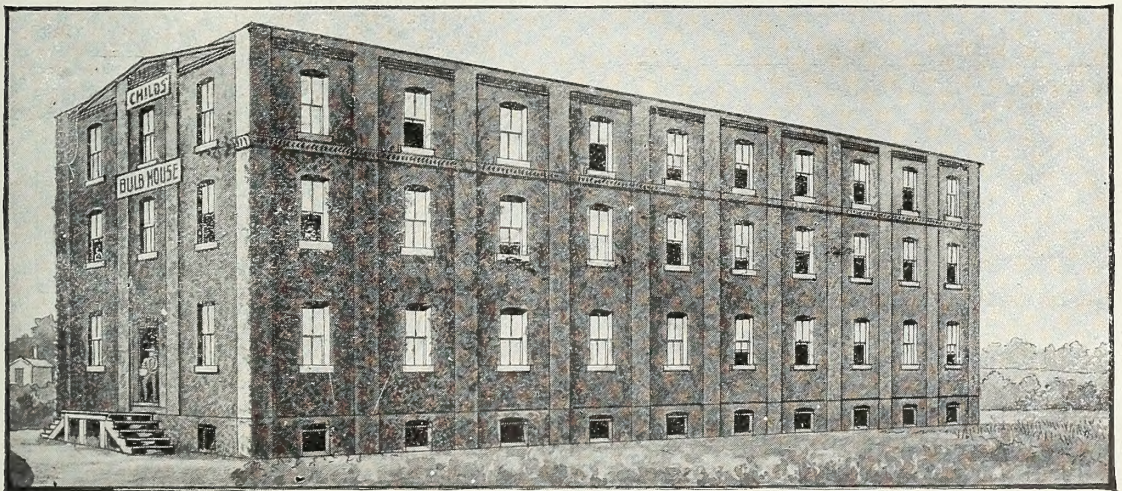
Hardy Perennial Plants.

We have a choice stock of fine Hardy Perennials as follows:

	Per 100.
Aster Alpina.....	\$ 6 00
Calliopsis Lanceolata.....	2 00
Clematis Paniculata.....	6 00
Delphinium Formosum.....	4 00
Daphne Cneorum.....	12 00
Iris, German Mixed.....	2 00
“ “ Honorable.....	3 00
“ “ Mad. Chereau.....	3 00
Iris Kämpferi, Double or Single Mixed, \$30 per 1000.....	3 50
Iris Kämpferi, Seedlings Mixed, \$25. per 1000..	3 00
Day Lily, White.....	4 00
“ “ Variegated Foliage.....	4 00
Eulalia Zebrina.....	3 00
“ Japonica.....	3 00
“ Gracilis.....	3 00
Arundo Donax Variegata.....	5 00
Hemerocallis Flava.....	3 00
“ Dumorteri.....	3 00
“ Double.....	3 00
Pæony, Mixed.....	6 00
“ Fragrans.....	5 00
“ Lady Elbrower.....	6 00
“ Officialis Scarlet.....	6 00
“ Double White.....	10 00
Rudbeckia Golden Glow.....	1 00
“ Golden Treasure.....	1 00
Vincetoxicum or Mosquito Catcher.....	2 00



The Principal Fire-
Proof Buildings of
Our Establishment.



OUR ENORMOUS BRICK BULB HOUSE, 40 x 100 FEET, 4 FLOORS.



For Prices, See Page 19.